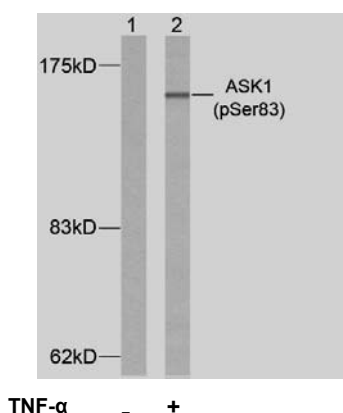


Rabbit anti ASK-1 (pSer83)

- Catalog Number:** pAP11178
Amount: 100µl (for 10 Western Blotting)
Form of Antibody: Rabbit IgG in phosphate buffered saline (without Mg²⁺ and Ca²⁺), pH 7.4, 150mM NaCl, 0.02% sodium azide and 50% glycerol.
Storage/Stability: Store at -20°C/1 year
Immunogen: The antiserum was produced against synthesized phosphopeptide derived from human ASK1 around the phosphorylation site of serine 83 (G-S-S^P-V-G).
Purification: The antibody was affinity-purified from rabbit antiserum by affinity-chromatography using epitope-specific phosphopeptide. The antibody against non-phosphopeptide was removed by chromatography using non-phosphopeptide corresponding to the phosphorylation site.
Specificity/Sensitivity: ASK1 (phospho-Ser83) antibody detects endogenous levels of ASK1 only when phosphorylated at serine 83.
Reactivity: Human
Applications: WB: 1:1000
Swiss-Prot No. : Q99683
References: Mabuchi S, et al. (2004) Endocrinology. 145(1): 49-58.
Yuan ZQ, et al. (2003) J Biol Chem. 278(26): 23432-23440.
Kim AH, et al. (2001) Mol Cell Biol. 21(3): 893-901.



Western blot analysis of extracts from K562 cells using ASK1 (phospho-Ser83) antibody (pAP11178).

For Research Use Only

Contact & Ordering Information: Angio-Proteomie, 11 Park Drive, Suite 12, Boston, MA 02215, USA. Fax: (480) 247-4337, angioproteomie@gmail.com