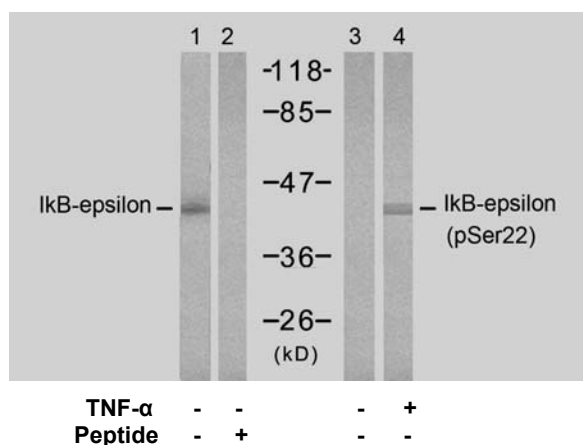


Rabbit anti IκB-ε (pSer22)

- Catalog Number:** pAP11213
Amount: 100μl (for 10 Western Blotting)
Swiss-Prot No. : O00221
Form of Antibody: Rabbit IgG in phosphate buffered saline (without Mg²⁺ and Ca²⁺), pH 7.4, 150mM NaCl, 0.02% sodium azide and 50% glycerol.
Storage/Stability: Store at -20°C/1 year
Immunogen: The antiserum was produced against synthesized phosphopeptide derived from human IκB-ε around the phosphorylation site of serine 22 (I-E-S^P-L-R).
Purification: The antibody was affinity-purified from rabbit antiserum by affinity-chromatography using epitope-specific phosphopeptide. The antibody against non-phosphopeptide was removed by chromatography using non-phosphopeptide corresponding to the phosphorylation site.
Specificity/Sensitivity: IκB-ε (Phospho-Ser22) antibody detects endogenous levels of IκB-ε only when phosphorylated at serine 22.
Reactivity: Human, Mouse
Applications: WB: 1:1000
References: Shirane M, et al. (1999) J Biol Chem; 274(40): 28169-74
Karin, M. and Ben-Neriah, Y. (2000) Annu. Rev. Immunol. ;18, 621-663.
Chen, Z.J. et al. (1996) Cell; 84, 853-862.
Brown, K. et al. (1995) Science; 267, 1485-1488.



Western blot analysis of extract from 293 cells, untreated or treated with TNF-α (20ng/ml, 15min), using IκB-ε (Ab-22) antibody (AP21296, Lane 1 and 2) and IκB-ε (Phospho-Ser22) antibody (pAP11213, Lane 3 and 4).

For Research Use Only

Contact & Ordering Information: Angio-Proteomie, 11 Park Drive, Suite 12, Boston, MA 02215, USA. Fax: (480) 247-4337, angioproteomie@gmail.com