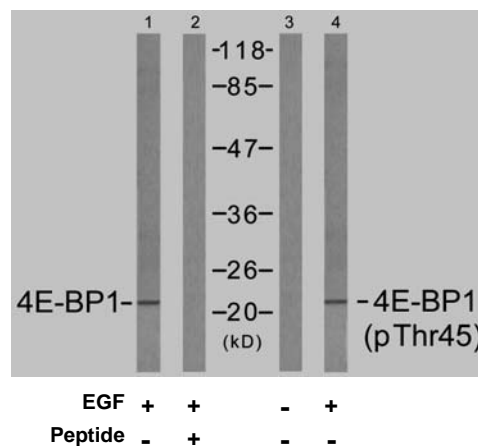


## Rabbit anti 4E-BP1 (pThr45)

- Catalog Number:** pAP11223  
**Amount:** 100µl (for 10 Western Blotting)  
**Swiss-Prot No. :** Q13541  
**All Names:** 4EBP1, EIF4EBP1, Eukaryotic translation initiation factor 4E binding protein 1, Insulin-stimulated EIF-4E binding protein PHAS-I, P/OKCL.6, PHAS-1, PHAS-I  
**All Sites:** Human: Thr45 or Thr46; Mouse: Thr44; Rat: Thr44  
**Form of Antibody:** Rabbit IgG in phosphate buffered saline (without Mg<sup>2+</sup> and Ca<sup>2+</sup>), pH 7.4, 150mM NaCl, 0.02% sodium azide and 50% glycerol.  
**Storage/Stability:** Store at -20°C/1 year  
**Immunogen:** The antiserum was produced against synthesized phosphopeptide derived from human 4E-BP1 around the phosphorylation site of threonine 45 (S-T-T<sup>P</sup>-P-G).  
**Purification:** The antibody was affinity-purified from rabbit antiserum by affinity-chromatography using epitope-specific phosphopeptide. The antibody against non-phosphopeptide was removed by chromatography using non-phosphopeptide corresponding to the phosphorylation site.  
**Specificity/Sensitivity:** 4E-BP1 (phospho-Thr45) antibody detects endogenous levels of 4E-BP1 only when phosphorylated at threonine 45. This antibody may cross-react with 4E-BP2 and 4E-BP3 when phosphorylated at equivalent sites.  
**Reactivity:** Human, Mouse, Rat  
**Applications:** WB: 1:1000  
**References:** Gingras AC, et al. (1998) Genes Dev 12(4): 502-513.  
 Brugarolas J, et al. (2004) Genes Dev 18(23): 2893-2904.  
 Kumar V, et al. (2000) EMBO J 19(5): 1087-1097.  
 Moody CA, et al. (2005) J Virol 79(9): 5499-5506.  
 Burnett PE, et al. (1998) Proc Natl Acad Sci U S A 95(4): 1432-1437.



Western blot analysis of extracts from MDA435 cells untreated or treated with EGF (200nm, 5min), using 4E-BP1 (Ab-45) antibody (AP21216, Lane1 and 2) and 4E-BP1 (phospho-Thr45) antibody (pAP11223, Lane 3 and 4).

**For Research Use Only**

Contact & Ordering Information: Angio-Proteomie, 11 Park Drive, Suite 12, Boston, MA 02215, USA. Fax: (480) 247-4337, [angioproteomie@gmail.com](mailto:angioproteomie@gmail.com)