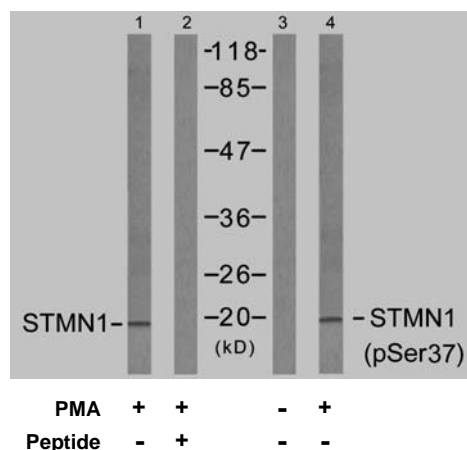


## Rabbit anti Stathmin-1 (pSer37)

- Catalog Number:** pAP11225  
**Amount:** 100µl (for 10 Western Blotting)  
**Swiss-Prot No. :** P16949  
**All Names:** stathmin 1,LAG, LAP18, Leukemia-associated gene protein, Leukemia-associated phosphoprotein p18, Metablastin, Oncoprotein 18, Op18, PR22, Phosphoprotein p19, Pr22 protein, Prosolin, STN1, pp17, pp19, stathmin  
**All Sites:** Human: Ser37; Mouse: Ser37; Rat: Ser37  
**Form of Antibody:** Rabbit IgG in phosphate buffered saline (without Mg<sup>2+</sup> and Ca<sup>2+</sup>), pH 7.4, 150mM NaCl, 0.02% sodium azide and 50% glycerol.  
**Storage/Stability:** Store at -20°C/1 year  
**Immunogen:** The antiserum was produced against synthesized phosphopeptide derived from human Stathmin 1 around the phosphorylation site of serine 37 (P-L-S<sup>P</sup>-P-P).  
**Purification:** The antibody was affinity-purified from rabbit antiserum by affinity-chromatography using epitope-specific phosphopeptide. The antibody against non-phosphopeptide was removed by chromatography using non-phosphopeptide corresponding to the phosphorylation site.  
**Specificity/Sensitivity:** Stathmin 1 (phospho-Ser37) antibody detects endogenous levels of Stathmin 1 only when phosphorylated at serine 37.  
**Reactivity:** Human, Mouse, Rat  
**Applications:** WB: 1:1000  
**References:** Wang KK, et al. (1991) Biochem J 279(Pt 2): 537-544.  
 Sekimoto T, et al. (2004) EMBO J 23(9): 1934-1942.  
 Doye V, et al. (1992) Biochem J 287(Pt 2): 549-554.  
 Larsson N, et al. (1999) Mol Cell Biol 19(3): 2242-2250.



Western blot analysis of extracts from Jurkat cells untreated or treated with PMA (1ng/ml, 15min), using Stathmin 1 (Ab-37) antibody (AP21218, Line 1 and 2) and Stathmin 1 (phospho-Ser37) antibody (pAP11225, Line 3 and 4).

**For Research Use Only**

Contact & Ordering Information: Angio-Proteomie, 11 Park Drive, Suite 12, Boston, MA 02215, USA. Fax: (480) 247-4337, [angioproteomie@gmail.com](mailto:angioproteomie@gmail.com)