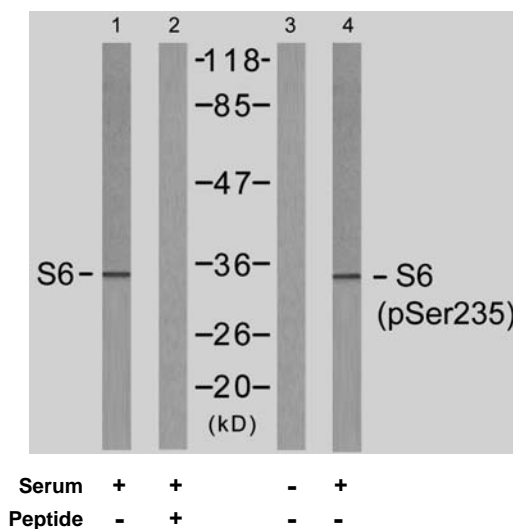




11 Park Drive, Suite 12
Boston, MA 02215

Rabbit anti S6 Ribosomal Protein (pSer235)

- Catalog Number:** pAP11232
Amount: 100µl (for 10 Western Blotting)
Swiss-Prot No. : P62753
All Names: 40S ribosomal protein S6, Phosphoprotein NP33, RPS6, RS6, ribosomal protein S6
All Sites: Human: Ser235; Mouse: Ser235; Rat: Ser235
Form of Antibody: Rabbit IgG in phosphate buffered saline (without Mg^{2+} and Ca^{2+}), pH 7.4, 150mM NaCl, 0.02% sodium azide and 50% glycerol.
Storage/Stability: Store at -20°C/1 year
Immunogen: The antiserum was produced against synthesized phosphopeptide derived from human S6 Ribosomal protein around the phosphorylation site of serine 235 (R-L-S^P-S-L).
Purification: The antibody was affinity-purified from rabbit antiserum by affinity-chromatography using epitope-specific phosphopeptide. The antibody against non-phosphopeptide was removed by chromatography using non-phosphopeptide corresponding to the phosphorylation site.
Specificity/Sensitivity: S6 Ribosomal protein (phospho-Ser235) antibody detects endogenous levels of S6 Ribosomal protein only when phosphorylated at serine 235.
Reactivity: Human, Mouse, Rat
Applications: WB: 1:1000
References: McBride K, et al. (1998) Mol Cell Biol 18(9): 5073-5081.
 Williams AJ, et al. (2003) Plant Physiol 132(4): 2086-2097.
 Wilson MA, et al. (1997) Biochem J 325(Pt 1): 217-222.
 Arnesen T, et al. (2005) Biochem J 386(Pt 3): 433-443.



Western blot analysis of the extracts from 293 cells untreated or treated with serum (10%, 15min), using S6 Ribosomal protein (Ab-235) antibody (AP21225, Line 1 and 2) and S6 Ribosomal protein (phospho-Ser235) antibody (pAP11232, Line 3 and 4).

For Research Use Only

Contact & Ordering Information: Angio-Proteomie, 11 Park Drive, Suite 12, Boston, MA 02215, USA. Fax: (480) 247-4337, angioproteomie@gmail.com