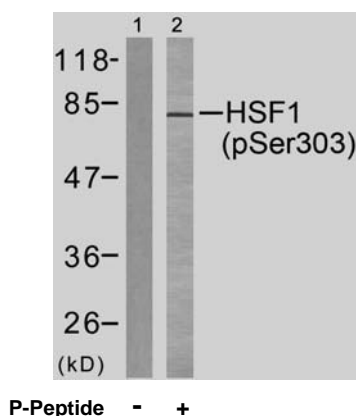


## Rabbit anti HSF1 (pSer303)

- Catalog Number:** pAP11263  
**Amount:** 100µl (for 10 Western Blotting)  
**Swiss-Prot No. :** Q00613  
**Form of Antibody:** Rabbit IgG in phosphate buffered saline (without  $Mg^{2+}$  and  $Ca^{2+}$ ), pH 7.4, 150mM NaCl, 0.02% sodium azide and 50% glycerol.  
**Storage/Stability:** Store at -20°C/1 year  
**Immunogen:** The antiserum was produced against synthesized phosphopeptide derived from human HSF1 around the phosphorylation site of serine 303 (P-P-S<sup>P</sup>-P-P).  
**Purification:** The antibody was affinity-purified from rabbit antiserum by affinity-chromatography using epitope-specific phosphopeptide. The antibody against non-phosphopeptide was removed by chromatography using non-phosphopeptide corresponding to the phosphorylation site.  
**Specificity/Sensitivity:** HSF1 (phospho-Ser303) antibody detects endogenous levels of HSF1 only when phosphorylated at serine 303.  
**Reactivity:** Human  
**Applications:** WB: 1:1000  
**References:** Parvaneh Rafiee, et.al. (2006) Am J Physiol Cell Physiol ; 291: C931 - C945  
 Fumika Shinozaki, et.al. (2006) J. Biol. Chem ; 281: 16361 - 16369.  
 Eiichi Takaki, et.al. (2006) J. Biol. Chem ; 281: 4931 - 4937.  
 Jan-Jong Hung, et.al. (1998) J. Biol. Chem ; 273: 31924.



Western blot analysis of extracts from MCF7 cells, using HSF1 (phospho-Ser303) antibody (pAP11263).

**For Research Use Only**

Contact & Ordering Information: Angio-Proteomie, 11 Park Drive, Suite 12, Boston, MA 02215, USA. Fax: (480) 247-4337, [angioproteomie@gmail.com](mailto:angioproteomie@gmail.com)