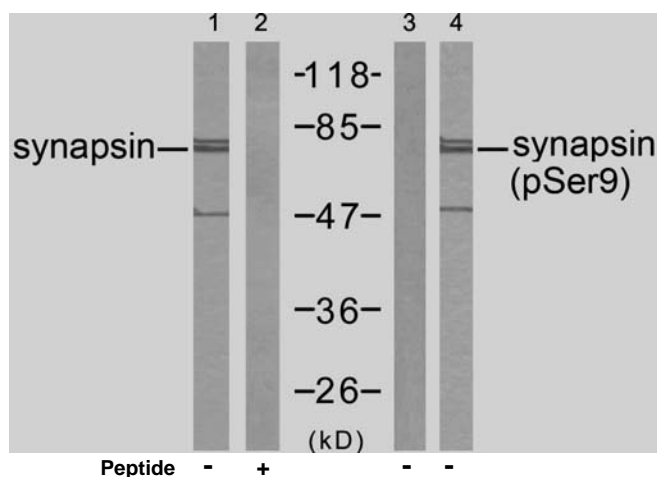


Rabbit anti synapsin (pSer9)

- Catalog Number:** pAP11267
Amount: 100µl (for 10 Western Blotting)
Swiss-Prot No. : P17600
All Names: SYN1, Synapsin-1
All Sites: Human: Ser9; Mouse: Ser9; Rat: Ser9
Form of Antibody: Rabbit IgG in phosphate buffered saline (without Mg^{2+} and Ca^{2+}), pH 7.4, 150mM NaCl, 0.02% sodium azide and 50% glycerol.
Storage/Stability: Store at -20°C/1 year
Immunogen: The antiserum was produced against synthesized phosphopeptide derived from human synapsin around the phosphorylation site of serine 9 (R-L-S^P-D-S).
Purification: The antibody was affinity-purified from rabbit antiserum by affinity-chromatography using epitope-specific phosphopeptide. The antibody against non-phosphopeptide was removed by chromatography using non-phosphopeptide corresponding to the phosphorylation site.
Specificity/Sensitivity: synapsin (phospho-Ser9) antibody detects endogenous levels of synapsin only when phosphorylated at serine 9.
Reactivity: Human, Mouse, Rat
Applications: WB: 1:1000
References: Diviya Sinha, et.al. (2005) Am J Physiol Renal Physiol ; 288: F703 - F713.
Franco Onofri, et.al. (2000) J. Biol. Chem ; 275: 29857.
Dario Bonanomi, et.al. (2005) J. Neurosci; 25: 7299 - 7308.
Hiroshi Tokumitsu, et.al. (2005) J. Biol. Chem ; 280: 35108 - 35118.



Western blot analysis of extract from mouse brain tissue, using synapsin (Ab-9) antibody (AP21259, Line 1 and 2) and synapsin (phospho-Ser9) antibody (pAP11267, Line 3 and 4).

For Research Use Only

Contact & Ordering Information: Angio-Proteomie, 11 Park Drive, Suite 12, Boston, MA 02215, USA. Fax: (480) 247-4337, angioproteomie@gmail.com