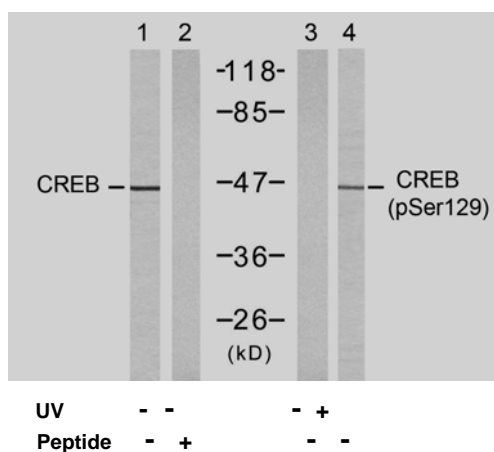


## Rabbit anti CREB (pSer129)

- Catalog Number:** pAP11273  
**Amount:** 100µl (for 10 Western Blotting)  
**Swiss-Prot No. :** P16220  
**Form of Antibody:** Rabbit IgG in phosphate buffered saline (without Mg<sup>2+</sup> and Ca<sup>2+</sup>), pH 7.4, 150mM NaCl, 0.02% sodium azide and 50% glycerol.  
**Storage/Stability:** Store at -20°C/1 year  
**Immunogen:** The antiserum was produced against synthesized phosphopeptide derived from human CREB around the phosphorylation site of serine 129 (I-L-S<sup>P</sup>-R-R).  
**Purification:** The antibody was affinity-purified from rabbit antiserum by affinity-chromatography using epitope-specific phosphopeptide. The antibody against non-phosphopeptide was removed by chromatography using non-phosphopeptide corresponding to the phosphorylation site.  
**Specificity/Sensitivity:** CREB (phospho-Ser129) antibody detects endogenous levels of CREB only when phosphorylated at serine 129.  
**Reactivity:** Human, Mouse, Rat  
**Applications:** WB: 1:1000  
**References:** Chrystelle V. Garat, et al. (2006) Mol. Cell. Biol ; 26: 4934 - 4948.  
 Lilah Rothen, et al. (2004) Mol. Pharmacol ; 66: 1536 - 1543.  
 Darren R. Tyson, et al. (2002) Endocrinology; 143: 674.  
 Kyung-Woo Park, et al. (2003) Arterioscler. Thromb. Vasc. Biol ; 23: 1364.



Western blot analysis of extracts from 293 cells untreated or treated with UV, using CREB (Ab-129) antibody (AP21265, Lane 1 and 2) and CREB (phospho-Ser129) antibody (pAP11273, Lane 1 and 2).

**For Research Use Only**

Contact & Ordering Information: Angio-Proteomie, 11 Park Drive, Suite 12, Boston, MA 02215, USA. Fax: (480) 247-4337, [angioproteomie@gmail.com](mailto:angioproteomie@gmail.com)