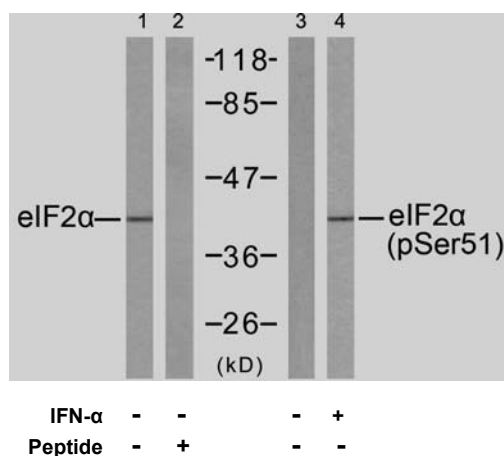


Rabbit anti eIF2 α (pSer51)

- Catalog Number:** pAP11279
Amount: 100 μ l (for 10 Western Blotting)
Swiss-Prot No. : P05198
Form of Antibody: Rabbit IgG in phosphate buffered saline (without Mg²⁺ and Ca²⁺), pH 7.4, 150mM NaCl, 0.02% sodium azide and 50% glycerol.
Storage/Stability: Store at -20°C/1 year
Immunogen: The antiserum was produced against synthesized phosphopeptide derived from human eIF2 α around the phosphorylation site of serine 51 (E-L-S^P-R-R).
Purification: The antibody was affinity-purified from rabbit antiserum by affinity-chromatography using epitope-specific phosphopeptide. The antibody against non-phosphopeptide was removed by chromatography using non-phosphopeptide corresponding to the phosphorylation site.
Specificity/Sensitivity: eIF2 α (phospho-Ser51) antibody detects endogenous levels of eIF2 α only when phosphorylated at serine 51.
Reactivity: Human, Mouse, Rat
Applications: WB: 1:1000
References: Xavier Saelens, et al. (2001) J. Biol. Chem; 276: 41620 - 41628.
Hiroyuki Kubota, et al. (2003) J. Biol. Chem ; 278: 20457 - 20460.
Shijian Chu, et al. (2006) Am J Physiol Lung Cell Mol Physiol ; 291: L983 - L992.
Eileen Connolly, et al. (2006) Mol. Cell. Biol ; 26: 3955 - 3965.



Western blot analysis of extracts from K562 cells untreated or treated with IFN- α (100ng/ml, 20min), using eIF2 α (Ab-51) antibody (AP21271, Lane 1 and 2) and eIF2 α (phospho-Ser51) antibody (pAP11279, Lane 3 and 4).

For Research Use Only

Contact & Ordering Information: Angio-Proteomie, 11 Park Drive, Suite 12, Boston, MA 02215, USA. Fax: (480) 247-4337, angioproteomie@gmail.com