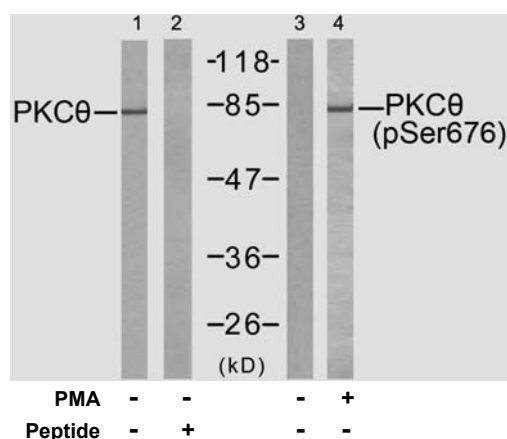


Rabbit anti PKC θ (pSer216)

- Catalog Number:** pAP11297
Amount: 100 μ l (for 10 Western Blotting)
Swiss-Prot No. : Q04759
All Names: PRKCQ , Protein kinase C theta type
Form of Antibody: Rabbit IgG in phosphate buffered saline (without Mg²⁺ and Ca²⁺), pH 7.4, 150mM NaCl, 0.02% sodium azide and 50% glycerol.
Storage/Stability: Store at -20°C/1 year
Immunogen: The antiserum was produced against synthesized phosphopeptide derived from human PKC θ around the phosphorylation site of serine 676 (R-L-S^P-F-A).
Purification: The antibody was affinity-purified from rabbit antiserum by affinity-chromatography using epitope-specific phosphopeptide. The antibody against non-phosphopeptide was removed by chromatography using non-phosphopeptide corresponding to the phosphorylation site.
Specificity/Sensitivity: PKC θ (phospho-Ser676) antibody detects endogenous levels of PKC θ only when phosphorylated at serine 676.
Reactivity: Human, Mouse, Rat
Applications: WB: 1:1000
References: Kristof Van Kolen, et al. (2006) FEBS J ; 273: 1843 - 1854.
 Martin Villalba, et al. (2002) J. Cell Biol ; 157: 253.
 Jie Zhang, et al. (2004) J. Biol. Chem ; 279: 22118 - 22123.
 Castro AF, et al. (1998) Am J Physiol Cell Physiol; 275: C113 - C119.



Western blot analysis of extracts from Jurkat cells untreated or treated with PMA (1ng/ml, 5min), using PKC θ (Ab-676) antibody (AP21297, Line 1 and 2) and PKC θ (phospho-Ser676) antibody (pAP11297, Line 3 and 4)

For Research Use Only

Contact & Ordering Information: Angio-Proteomie, 11 Park Drive, Suite 12, Boston, MA 02215, USA. Fax: (480) 247-4337, angioproteomie@gmail.com