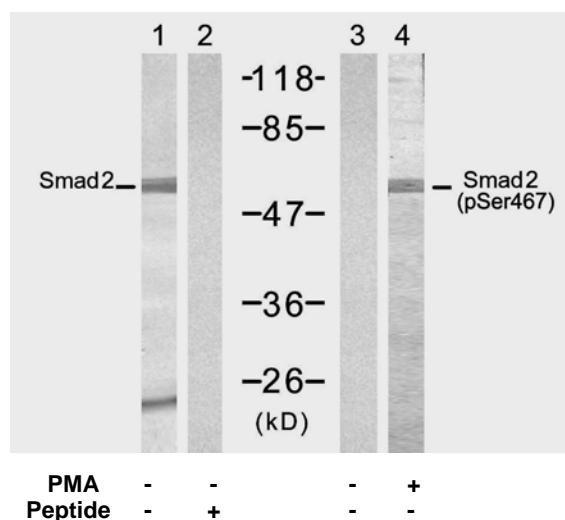


Rabbit anti Smad2 (pSer467)

- Catalog Number:** pAP11322
Amount: 100µl (for 10 Western Blotting)
Swiss-Prot No. : Q15796
Form of Antibody: Rabbit IgG in phosphate buffered saline (without Mg^{2+} and Ca^{2+}), pH 7.4, 150mM NaCl, 0.02% sodium azide and 50% glycerol.
Storage/Stability: Store at -20°C/1 year
Immunogen: The antiserum was produced against synthesized phosphopeptide derived from human Smad2 around the phosphorylation site of serine 467 (C-S-S-M-S^P).
Purification: The antibody was affinity-purified from rabbit antiserum by affinity-chromatography using epitope-specific phosphopeptide. The antibody against non-phosphopeptide was removed by chromatography using non-phosphopeptide corresponding to the phosphorylation site.
Specificity/Sensitivity: Smad2 (Phospho-Ser467) Antibody detects endogenous levels of Smad2 only when phosphorylated at serine 467.
Reactivity: Human, Mouse, Rat
Applications: WB: 1:1000
References: Sang Gyun Kim et al. (2004) Mol Biol Cell. February; 15(2): 420–434.
 Rebecca A. Randall et al. (2004) Mol Cell Biol. February; 24(3): 1106–1121.
 Kimberly A Brown et al. (2004) Breast Cancer Res.; 6(3): R215–R231.



Western blot analysis of extract from 293 cells untreated or treated with PMA (200nM, 30min), using Smad2 (Ab-467) Antibody (AP21322, Lane 1 and 2) and Smad2 (Phospho-Ser467) Antibody (pAP11322, Lane 3 and 4).

For Research Use Only

Contact & Ordering Information: Angio-Proteomie, 11 Park Drive, Suite 12, Boston, MA 02215, USA. Fax: (480) 247-4337, angioproteomie@gmail.com